

THE SALVAGE GURU

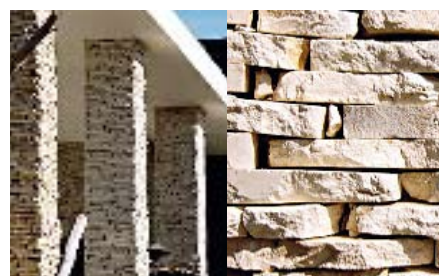
Designer Neil Stemmet rebuilt his current beachside house using materials reclaimed from the original 1970s building, as well as those provided by nature.



Nothing was wasted with rubble from the demolished walls forming the property's new foundations. The sandstone used in the original pool and septic tank was recycled as cladding and the existing black-slate floor tiles were fitted as skirting inside and out.

It didn't stop there. 'After fires raised hectares of Overberg fynbos, we retrieved burnt trees to be used as perimeter borders and decoration,' says Stemmet. 'We also exchanged an antique yellowwood cabinet for some old blue-gum poles for fencing.'

This was all underpinned by Stemmet's uncompromising green philosophy that makes you sit up and take notice. 'The idea behind this construction was to celebrate creativity, both natural and human. So often amazing things in nature are overlooked. It's about taking time out from modern life and looking at a tree trunk to remind yourself of the dual functions of beauty and sustainability.'



CHOOSE SUSTAINABLE PRODUCT

The ideas gaining momentum, plus the people and

MAGPIE Currently in a media whirlwind after the Obama family chose two of their chandeliers for the White House, Magpie gets their materials from a recycling bin outside the studio and from 'local Barrydalers who give us all their trash'. The Magpie group, consisting of Scott Hart, Shane Petzer, Sean Daniel and Richard Panaino, has also set up the Rooi Doppies project, which is aimed at supporting the community, creating jobs and highlighting important issues, such as HIV/Aids, substance abuse, recycling and environmental concerns. ■ **Magpie** ☎ 028 572 1997; 🌐 www.magpiehomefineware.mfbiz.com



HEATH NASH Nash sources his recyclable materials from two companies: Poise Properties who buy directly from recyclers, such as Wynberg and Hout Bay drop offs, and Wasteplan. All materials are sanitised with ecofriendly chemicals before being cut and shaped, ready for renewed life as one of Nash's creations. ■ **Heath Nash** ☎ 021 447 5757

FOREST CREATIONS Run by brothers Grant and Craig Bramwell, Forest Creations only uses wood from storm-damaged, fallen or dead trees. Their products range from beautiful gnarled and polished tree-trunk coffee tables to Dali-esque trunk cross-section clocks, as well as decking, window and door frames. The brothers also try, where possible, to use alien species, including the infamous blue gum. 'Few people realise how good blue gum is for decking,' says Grant. 'It even rivals some of the imported woods.' ■ **Forest Creations** ☎ 021 703 7082; 🌐 www.forestcreations.co.za



DESIGN & ARCHITECTURAL INNOVATION

their products who are elevating the eco aesthetic

BUILD BETTER WITH GREEN ROOFS

Q What is a green roof? **A** Also known as a living roof, a green roof consists of a series of layers, starting with a conventional structural roof surface and moving through various waterproof membranes and barrier materials before finishing in a layer of soil and vegetation. **Q** What do they do? **A** Green roofs are fantastic insulators and help to reduce CO2 emissions produced by heaters and air conditioners. Rainfall, too, is naturally recycled by the vegetation, minimising water runoff. It's also a natural habitat for insects and birds, as well as a

space to grow vegetables, herbs and fruit. **Q** Who is using them and why? **A** Green roofs are becoming increasingly popular in cities, with some European countries even imposing a legal requirement for all new flat-roofed buildings to include them. The current trend for building green has seen an influx of these roofs being used on private homes, especially in rural areas to help buildings blend in with their surroundings. **Q** What are the costs? **A** It isn't cheap and costs up to three times as much as a conventional roofing option. But the energy savings will help cut costs in the long run.

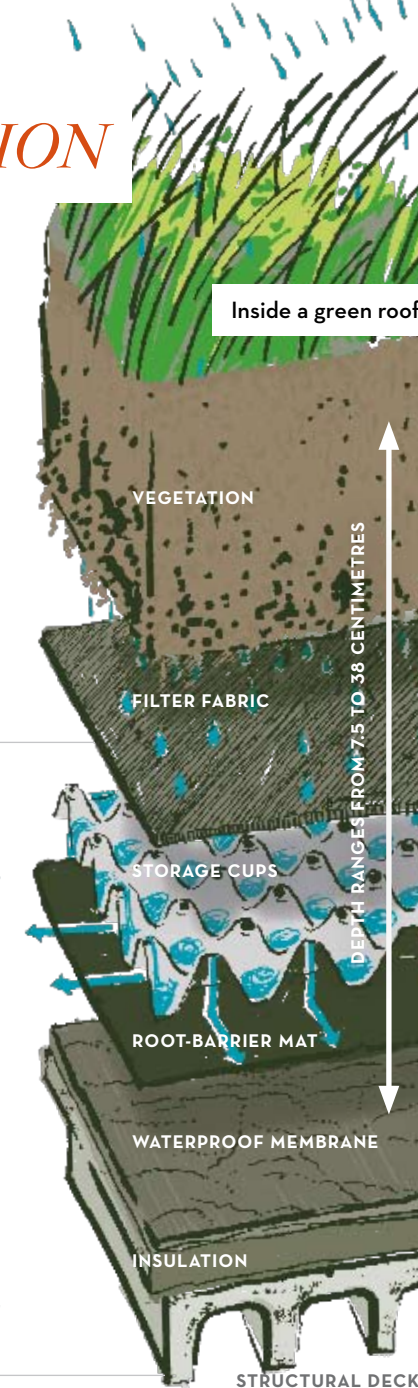


WITHIN THESE STRAW WALLS Like their green-roof cousins, straw-bale houses are seeing a major comeback in the world of building. Made from densely compacted consistently sized rectangular bales, straw houses are inexpensive, simple to construct and kind to both the environment and your pocket. Once sealed within their plaster walls, the bales provide excellent thermal insulation, cutting costs on home heating and cooling, and in turn providing a healthier indoor environment. Don't worry about the fire risk - the bales are too tightly packed to hold enough oxygen to facilitate combustion.

■ **FOR ENVIRONMENTALLY FRIENDLY WALL FINISHES** visit **Envirotouch** 🌐 www.envirotouch.com; **Breathecoat** 🌐 www.breathecoat.co.za; **Harlequin Paints** 🌐 www.harlequinpaint.com
 ■ **FOR GREEN ROOFS, STRAW-BALE AND SANDBAG HOUSES** call **Andy Horn** from **Eco Design Architects & Consultants** ☎ 021 462 1614

'The movement is gaining momentum. We've seen a surge in developers committing to green philosophies so there's definitely a growing awareness'

LISA PARKES, GREEN BUILDING COUNCIL SOUTH AFRICA



HALDANE MARTIN

At the 2007 Design Indaba, Martin put himself in the spotlight with his Design with a Conscience talk, using his own ecofriendly designs, particularly his 'Zulu Mama' café chair, 'New Slant' modular shelving system and 'Fiela Feather' light, as examples. Not only are they made from recycled materials but they also provide work for previously disadvantaged township women and disabled workers. 'Sustainability will always be an important consideration in all future design projects,' says Martin. ■ **Haldane Martin** ☎ 021 448 0999; 🌐 www.haldanemartin.co.za

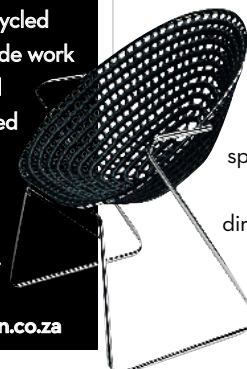


ILLUSTRATION: SAREL GREYLING

WHERE TO FIND AN ECO ARCHITECT

■ **GBCSA** Launched in 2007, the Green Building Council of South Africa is a non-profit membership-based organisation. It's driven by a vision to transform the South African property industry and ensure that, in the future, all buildings are designed, built and operated in an environmentally sustainable way. Developers, builders and architects are offered a chance to earn their green stripes through training and education courses. The company also assesses properties and professionals, awarding those with environmental savvy Green Star accreditation. ■ **Green Building Council South Africa** 🌐 www.gbcsa.org.za ■ **SAIA** Although not specifically geared towards a green clientele, the South African Institute of Architects has a comprehensive directory, which can be bought online, making it a good starting point when trying to find local professionals who incorporate sustainable principles into their work. ■ **SAIA** ☎ 011 782 1315; 🌐 www.saia.org

ECO-CONCEPT SHOWROOM
 Open since January this year, Roxy and Dee Wood's interior-design eco-concept showroom presents an impressive range of products, from solar photovoltaic panels able to run computers to sustainable materials and natural fabrics. 'Our motto is, "Green is hot,"' says Roxy. 'We offer an interior-design service to help customers create a space that's comfortable, stylish and ecofriendly.' ■ **Green Circle Eco Interior Design** ☎ 011 880 9700; 🌐 www.greencircledesign.co.za